



SAKHIR

BAHRAIN

DEC 11-18, 2021 | BAHRAIN INTERNATIONAL KARTING CIRCUIT



TECHNICAL REGULATIONS

MINI MAX / MICRO MAX / PROJECT E20



Supported by:



RMCGF 2021 – MICRO MAX / MINI MAX / PROJECT E20

A. 125 MICRO MAX / 125 MINI MAX CLASSES 3

1. EQUIPMENT 3

1.1. AMOUNT OF EQUIPMENT 3

1.2. CHASSIS, BRAKE SYSTEM, BODYWORK 3

1.3. TIRES 3

1.4. ENGINES 4

1.5. RETURN OF EQUIPMENT 4

1.6. DATA ACQUISITION 4

1.7. SAFETY EQUIPMENT 4

1.8. FUEL/OIL 4

1.9. ADVERTISING ON ENGINES 5

2. MODIFICATIONS, LEGAL ADDITIONS, NON-TECH ITEMS, MEASUREMENTS..... 5

3. TECHNICAL SPECIFICATIONS (OUTSIDE THE ENGINE AND CARBURETTOR SEAL) FOR ROTAX KART ENGINES..... 5

3.1. IGNITION SYSTEM 5

3.2. CARBURETTOR 6

3.3. RADIATOR..... 6

3.4. EXHAUST SOCKET 6

3.5. EXHAUST SYSTEM 7

B. PROJECT E20 CLASS 10

1. EQUIPMENT 10

1.1. AMOUNT OF EQUIPMENT 10

1.2. CHASSIS, BRAKE SYSTEM, BODYWORK 10

1.3. TIRES 11

1.4. ELECTRICAL POWERTRAIN 12

1.5. RETURN OF EQUIPMENT 12

1.6. DATA ACQUISITION..... 12

1.7. SAFETY EQUIPMENT 12

1.8. ADVERTISING ON PROJECT E20 VEHICLE 12

2. MODIFICATIONS, LEGAL ADDITIONS, NON-TECH ITEMS, MEASUREMENTS..... 12

3. TECHNICAL SPECIFICATIONS FOR THE ELECTRICAL POWERTRAIN 12

C. PERMITTED ADJUSTMENTS TO THE CHASSIS, ENGINE, CARBURETTOR AND DRIVE TRAIN OPTIONS 13

125 MICRO MAX – BIRELART 13

125 MINI MAX – IPKARTING PRAGA..... 14

The chapter A refers to the 125 Micro MAX and 125 Mini MAX Technical Regulations.

The chapter B refers to the Project E20 Technical Regulations.

The Competition shall be run in accordance with these RMC GF 2021 Technical Regulations and official Bulletins and:

- ROTAX MAX CHALLENGE GRAND FINALS 2021 Technical Regulations (Junior MAX, Senior MAX, DD2 and DD2 Master) and the official Bulletins
- ROTAX MAX CHALLENGE GRAND FINALS 2021 Sporting Regulations and the official Bulletins
- ROTAX MAX CHALLENGE GRAND FINALS 2021 Supplementary Regulations
- CIK/FIA Karting Technical Regulations and official Bulletins

The Organizer of the event, following the agreement of the BMF, reserves the right to issue modifications to the Technical Regulations, that will be published as Official Bulletins.

The English language is the official version.

Headings in this document are for ease of reference only and do not form part of these Technical Regulations.

A. 125 MICRO MAX / 125 MINI MAX CLASSES

1. EQUIPMENT

The only equipment – complete kart and tires – allowed during the event will be provided on a loan basis, by the organizer and must be in accordance with these Regulations and its Appendices.

1.1. Amount of equipment

According to Article 2.1. of the RMC GF 2021 Technical Regulations (Junior Max, Senior Max, DD2 and DD2 Master)

1.2. Chassis, brake system, bodywork

1.2.1. According to Article 2.2. of the RMC GF 2021 Technical Regulations (Junior Max, Senior Max, DD2 and DD2 Master).

1.2.2. Single brand chassis per category, defined by tender. The brand for each class is:

125 Micro MAX: BirelART

125 Mini MAX: IPKarting PRAGA

1.3. Tires

1.3.1. Type

| | | | |
|-----|------------------|----------------------|---------------------|
| Dry | Mojo C2 CIK Mini | front 4.0 x 10.0 – 5 | rear 5.0 x 11.0 – 5 |
| Wet | Mojo CW CIK Mini | front 3.6 x 10.0 – 5 | rear 4.5 x 11.0 – 5 |

1.3.2. Quantity for each category

1. Dry tires:

Micro Max

- 1 set for the whole event (non parc fermé status).

Mini Max

- 1 set is for non-qualifying practices (non parc fermé status).
- 1 set is for qualifying up to and including finals (non parc fermé status).

2. Wet tires:

- Maximum one set of MOJO CW CIK Mini will be handed out for non-qualifying practices.
- Organizer keeps the right to decide if a second set of wet tires will be handed out for qualifying practice up to and including final.

- Maximum 2 sets are available for the whole event for each category. They will only get handed out in case of rain (non parc fermé status).
3. Distribution and usage of tyres:
- The first set of slick tyres will be handed out after the chassis raffle. This set shall be used during the event for all non-qualifying practices.
 - A certain number of used tyres from the first set (depending on the category) will be kept in parc fermé.
 - After the last session of the non-qualifying practice each driver will receive a new set of slick tyres, which has to be used for the qualification phase up to and including the final. Each tyre of this set is marked with a barcode and the starting number and must be kept in the parc fermé.
 - Each driver is responsible for checking that the marking of the starting number is visible outside, otherwise the tyre has to be presented in parc fermé for remarking.
 - If there is a reasonable risk for rain, wet tires together with rims will be handed out in time. Wet tyres provided for non-qualifying practices as well as wet tyres provided for qualifying practices up to and including final have to be kept in parc fermé at any time. Each tyre of these sets is marked with a barcode and the starting number.
 - In case of mechanical failure of a tire, each driver may exchange maximum 1 front and 1 rear tire (each wet and dry), except if failure has been caused on purpose/misuse. In case of a mechanical failure of a tire, the technical scrutineer will determine if the failure was due to material defect or has been caused on purpose/misuse. The technical scrutineer's decision will be final and not subject to protest or appeal.
 - If the failure has not been caused on purpose/misuse the following rule will apply:
 - In all categories a new tire will be provided as replacement during Free Practice or before Qualifying. During Qualifying Heats, Pre-finals and Final a used tyre (with similar wear rate) will be provided as replacement.
- 1.3.3.** All tyres are marked with barcode and can only be used by the assigned driver.
- 1.3.4.** Tires are assigned (on a loan basis for the time of the event) to drivers, registered and routinely checked/scanned by means of the Rotax EMS (Event Management System).
- 1.3.5.** Strictly no modifications or tire treatment is allowed. Tire check with "tire sniffer" Mini-RAE-Lite: Maximum value = 4ppm. Over this value there will be a second check. If the value remains over the 4ppm, Driver will be disqualified from the event.
- 1.3.6.** Tires must be mounted in accordance with the rotation markings defined on the tire.

1.4. Engines

According to Article 2.4. of the RMCGF2021 Technical Regulations (Junior Max, Senior MAX, DD2 and DD2 Master).

The 125 Junior MAX engine is the basis for the engine configurations 125 Micro MAX and 125 Mini MAX.

1.5. Return of equipment

According to Article 2.5. of the RMCGF2021 Technical Regulations (Junior Max, Senior MAX, DD2 and DD2 Master).

1.6. Data acquisition

According to Article 2.6. of the RMCGF2021 Technical Regulations (Junior Max, Senior MAX, DD2 and DD2 Master).

1.7. Safety equipment

According to Article 3, CIK-FIA technical regulations.

1.8. Fuel/Oil

Pre-mixed fuel will be provided via Parc Fermé for the whole event.

1.9. Advertising on engines

No sponsor stickers except ROTAX, BRP, MOJO, XPS are allowed on the engine and engine accessories.

2. MODIFICATIONS, LEGAL ADDITIONS, NON-TECH ITEMS, MEASUREMENTS

According to Article 3. of the RMCGF2021 Technical Regulations (Junior Max, Senior MAX, DD2 and DD2 Master).

3. TECHNICAL SPECIFICATIONS (OUTSIDE THE ENGINE AND CARBURETOR SEAL) FOR ROTAX KART ENGINES

For all components outside the engine and carburettor seal, the competitor is responsible to assure the conformity with the RMCGF Technical Regulations 2021.

3.1. Ignition system

According to Article 4.6. of the RMCGF2021 Technical Regulations (Junior Max, Senior MAX, DD2 and DD2 Master).

3.1.1. The electronic control unit (ECU) is labelled with stickers and is still legal also if the sticker is unreadable or disappeared.

125 Micro MAX: "666815"

125 Mini MAX: "666818"

The ECU must be checked with the ECU tester (Rotax 276230) according to following procedure.

Disconnect engine cable harness from ECU.

Connect ECU tester cable harness to ECU.

Connect energy cable of ECU tester cable harness with the charging connector of engine cable harness.

At every connection with the battery the software version of the ECU tester will be indicated on the display for approx. 2 seconds.

The software version indicated on the display must be 2V00.

Start the test by pressing the button "✓" on the ECU tester.

After approx. 3 second the type of ECU ① that is actually tested will be indicated in the second line of the display.

After approx. 30 seconds the result ② of the test will be indicated in the first line of the display.



The ECU tester must indicate following results:

125 Micro MAX category

① 666815MAX

② !! Test OK !!

125 Mini MAX category

① 666818MINIMAX

② !! Test OK !!

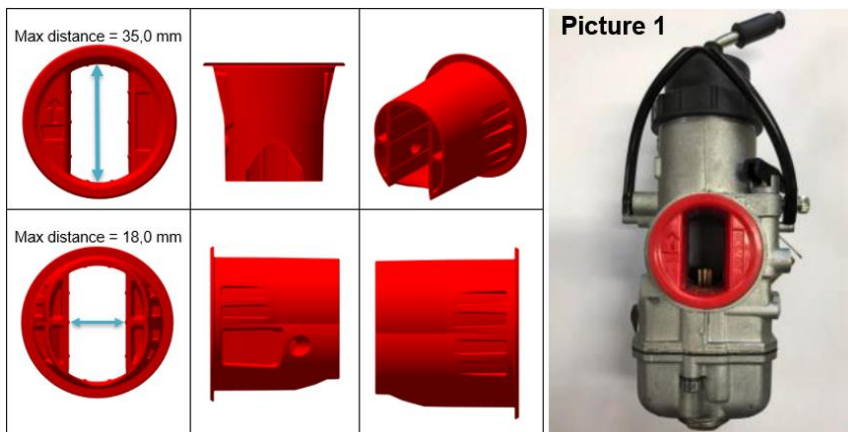
3.2. Carburettor

According to Article 4.9. of the RMCGF2021 Technical Regulations (Junior Max, Senior MAX, DD2 and DD2 Master).

3.2.1. For the 125 Micro MAX and 125 Mini MAX classes, the throttle body restrictor must be installed in the rear of the carburettor and in the correct orientation (see picture 1 below for reference).

ROTAX part number: 267536

No modifications are allowed, the ribbed surface on the inlet is to help ensure dimensions have not been modified.



3.3. Radiator

The removal of the thermostat from the cylinder head cover is an allowed modification.

Radiator must be mounted with all components as shown in the respective illustration.

To apply tape (neutral tape without advertising only) around the radiator is an allowed modification to control the air flow through the radiator.

Tape may not be removed from the radiator during operation on the track.

Any other non-original device to control the air flow through the radiator is prohibited.

Only version as shown in the illustration is legal to be used.

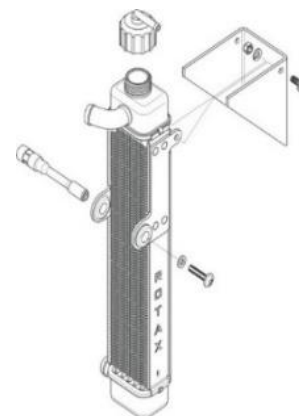
Cooling area:

Height: 280 – 300 mm

Width: 58 – 62 mm

Thickness of radiator: 30 – 34 mm

To remove the original flap is NOT allowed.



3.4. Exhaust socket

Just exhaust sockets with gasket ring are legal to be used.

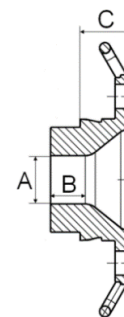
Diameter (A) must apply for a length (B) of at least 12 mm.

Maximum inner diameter (A) of exhaust sockets:

125 Micro Max: 18,30 mm (Rotax part no. 273 192)

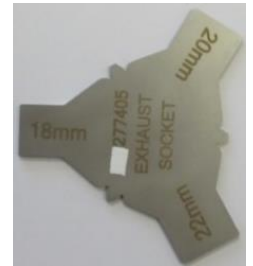
125 Mini Max: 22,20 mm (Rotax part no. 273 196)

The measurement (C) must be at least 18,5 mm.



The internal profile of the exhaust socket has to be checked with the template, Rotax 277 405.

Fit the template (125 Micro MAX "18 mm", 125 Mini MAX "22 mm") as far as possible into the exhaust socket (without gasket, carbon deposits removed). There has to be a constant crack light between the profile of the exhaust socket and the profile of the template.



3.5. Exhaust system

Allowed modifications:

- Replacing the original rivets of the silencer end cap by M4 Allen screws and M4 locking nuts.
- Replacing the original isolating mat in the silencer by one new original isolating mat.

A specific exhaust system has to be used for:

125 Micro Max: Rotax part no. 273 136

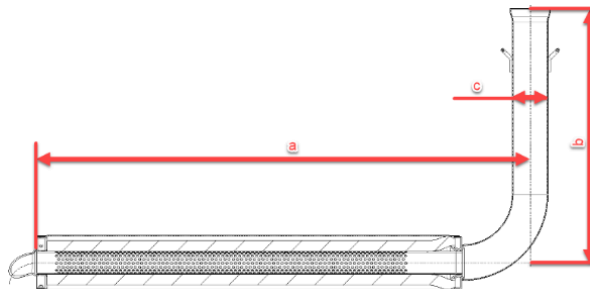
125 Mini Max: Rotax part no. 273 137

The Exhaust external body is a common component in both versions. The difference is in the internal components.

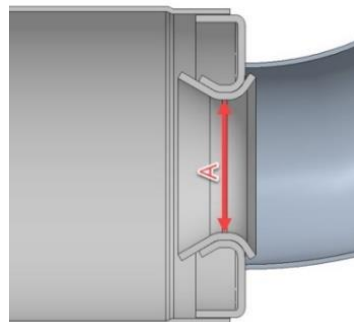
The silencer must be mounted in a position where the direction of the 90° elbow outlet (direction of the exhaust gasses) does not harm any component of the chassis.

The measurement in the diagram below are as follows:

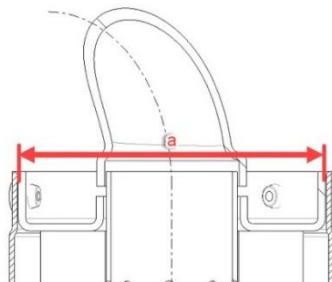
- (a) 580 mm +/- 5mm
- (b) 299 mm +/- 5mm
- (c) 42 mm +/- 3mm



A steel ball with a 28.0mm diameter must not pass through Section "A" and a steel ball with a 26.0mm diameter must be able to pass through Section "A" in the below diagram from the inlet and through the 90-degree elbow completely. (Internal exhaust components must first be removed).



The inner measurement of the exhaust system silencer end (a) in the below diagram must be a maximum of 63.0 mm.



(Note: this is not a measurement of the perforated tube)

The Exhaust must be installed firmly to the chassis using a rigid mount/s.

The Exhaust must be mounted to the rigid mount/s using 2 ROTAX silent blocks (part 660920 and or 260657 allowed).

The deflection of the 2 silent blocks is the only Exhaust movement allowed.

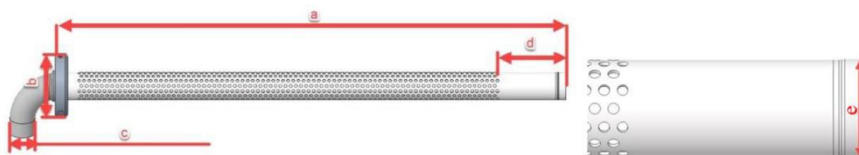
The Exhaust must be mounted in a neutral position with no stress on the 2 silent blocks.

125 Micro MAX Perforated tube

ROTAX part number: 273212

The measurements in the diagram below are as follows:

- (a) at least 498 mm
- (b) minimum outside diameter of 61 mm
- (c) maximum outside diameter of 26 mm
- (d) minimum length 63 mm
- (e) minimum outside diameter of 26.0 mm



The only legal Isolation matting for 125 Micro MAX is:
ROTAX part number 297982

New size minimum 480 x 270mm (+/-10mm)

New weight 207gr (176g – 238g)

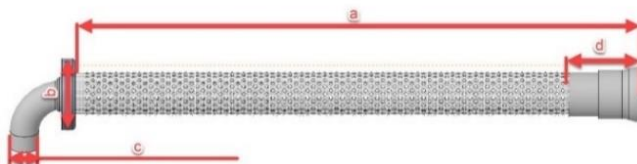
Used weight minimum 140g

Used weight maximum 350g

125 Mini MAX Perforated tube
ROTAX Part number 273211

The measurements in the diagram below are as follows:

- (a) at least 484 mm
- (b) minimum outside diameter of 61 mm
- (c) maximum outside diameter of 26 mm
- (d) at least 63 mm



Note:

Mini MAX perforated tube has a stamped ID marker "X" visible externally.



The only legal Isolation matting for 125 Mini MAX is:
ROTAX part number 297985

New size minimum 490 x 180mm (+/-10mm)
New weight 141g (119g – 163g)
Used weight minimum 110g
Used weight maximum 350g

B. PROJECT E20 CLASS

1. EQUIPMENT

The only equipment – complete kart and tyres – allowed during the event will be provided on a loan basis, by the organizer and must be in accordance with these Regulations and its Appendices.

1.1. Amount of equipment

According to Article 2.1. of the RMCGF2021 Technical Regulations (Junior Max, Senior Max, DD2 and DD2 Master)

1.2. Chassis, brake system, bodywork

1.2.1. Single brand chassis SODI as supplied by Rotax.

1.2.2. Chassis are randomly assigned (on a loan basis for the time of the event) to drivers, registered and routinely checked/scanned by means of the Rotax EMS (Event Management System).

1.2.3. Chassis, brake system, bodywork and Rear Wheel protection system must have a valid CIK homologation.

1.2.4. Chassis must be in accordance with RMCGF Technical Regulations 2021 and its Appendices.

It is permitted for the rear wheels to be inside the side bodywork.

Minimum rear wheel base is 1340 mm at the widest point.

Maximum rear wheel base is 1400 mm at the widest point.

1.2.5. The Chief Scrutineer may allow some changes on the chassis, e.g. in case the height of a driver will not allow him/her to fit properly in the kart.

1.2.6. Every chassis is marked with a chassis seal with a unique serial number (barcode)

1.2.7. During the event, the driver can only change the Project E20 vehicle after the authorization of the ROTAX Project E20 race manager or the Technical Scrutineers (this decision can be taken only due to parts failure or accident damage). In this case the frame and the other needed parts must be paid for in advance (prices will be defined in the manufacturers price list prior to the event).

1.2.8. Seat

- Original seat as supplied by Rotax is legal to be used only.
- It is the Driver / Entrant responsibility to mount the seat in accordance with the regulations.
- All fixation screws and nuts for the seat must be mounted and tightened at all times.
- Additional seat stays (supports) must be either fitted and tightened or removed from the chassis.
- Seat supports welded on the frame must not be bent except when authorized by Rotax.
- Lead must be fitted to the seat only.

1.2.9. Axles: Only the original rear axle as supplied by Rotax is legal to be used.

- Cutting the rear axle is not allowed.
- Fitting anything into the rear axle is not allowed!
- Stub axle adjustment must not be covered.

1.2.10. Stabilizer and sleeves must be either fitted and tightened or removed from the chassis.

1.2.11. Steering wheel can be mounted in any height positions to fit the driver using the standard or optional material as supplied/defined by the ROTAX. Steering shaft cannot be cut.

1.2.12. Floor tray: All screws and nuts must be fitted and tightened at all times, including the chassis protectors.

- A data acquisition sensor must be mounted to one of the fixation screws of the floor tray.
- Drilling a hole/s in the floor tray is not allowed.
- To remove the foot rest is an allowed adjustment.

1.2.13. The 2 supports for the rear bumper must be mounted tight to the frame at all times. Screws of the rear bumper may be loose to enable a lateral movement of the rear bumper only.

1.2.14. Only original brake pads as supplied by the chassis manufacturer for the Grand Finals are legal to be used.

1.2.15. It is only allowed to use the parts, including rims, originally supplied by ROTAX.

1.2.16. Legal optional parts:

- Shorter pedals.

- Shorter brake rod.
- Angled steering wheel boss.
- Adjustable steering wheel boss.

1.2.17. Front fairing

According to Article 2.2.17. of the RMCGF2021 Technical Regulations (Junior Max, Senior Max, DD2 and DD2 Master)

1.3. Tires

1.3.1. Type

| | | | |
|-----|-------------------|----------------------|---------------------|
| Dry | Mojo D5 CIK Prime | front 4.5 x 10.0 – 5 | rear 7.1 x 11.0 – 5 |
| Wet | Mojo W5 CIK Mini | front 4.5 x 10.0 – 5 | rear 6.0 x 11.0 – 5 |

1.3.2. Quantity for each category

1. Dry tires:

- 1 set is for non-qualifying practices (non parc fermé status)
- 1 set is for qualifying up to and including finals (Parc fermé status).

2. Wet tires:

- Maximum one set of MOJO W5 CIK will be handed out for non-qualifying practices.
- Organizer keeps the right to decide if a second set of wet tires will be handed out for qualifying practice up to and including final.
- Maximum 2 sets are available for the whole event for each category. They will only get handed out in case of rain. (Parc fermé status)

3. Distribution and usage of tyres:

- The first set of slick tyres will be handed out after the chassis raffle. This set shall be used during the event for all non-qualifying practices.
- A certain number of used tyres from the first set (depending on the category) will be kept in parc fermé.
- After the last session of the non-qualifying practice each driver will receive a new set of slick tyres, which has to be used for the qualification phase up to and including the final. Each tyre of this set is marked with a barcode and the starting number and must be kept in the parc fermé.
- Each driver is responsible for checking that the marking of the starting number is visible outside, otherwise the tyre has to be presented in parc fermé for remarking.
- If there is a reasonable risk for rain, wet tires together with rims will be handed out in time. Wet tyres provided for non-qualifying practices as well as wet tyres provided for qualifying practices up to and including final have to be kept in parc fermé at any time. Each tyre of these sets is marked with a barcode and the starting number.
- In case of mechanical failure of a tire, each driver may exchange maximum 1 front and 1 rear tire (each wet and dry), except if failure has been caused on purpose/misuse. In case of a mechanical failure of a tire, the technical scrutineer will determine if the failure was due to material defect or has been caused on purpose/misuse. The technical scrutineer's decision will be final and not subject to protest or appeal.
- If the failure has not been caused on purpose/misuse the following rule will apply:
 - In all categories a new tire will be provided as replacement during Free Practice or before Qualifying. During Qualifying Heats, Pre-finals and Final a used tyre (with similar wear rate) will be provided as replacement.

1.3.3. All tyres are marked with barcode and can only be used by the assigned driver.

1.3.4. Tyres are assigned (on a loan basis for the time of the event) to drivers, registered and routinely checked/scanned by means of the Rotax EMS (Event Management System).

1.3.5. Strictly no modifications or tire treatment is allowed. Tire check with “tire sniffer” Mini-RAE-Lite: Maximum value = 4ppm. Over this value there will be a second check. If the value remains over the 4ppm, Driver will be disqualified from the event.

1.3.6. Tyres must be mounted in accordance with the rotation markings defined on the tyre.

1.4. Electrical powertrain

According to 2021 DEKM Technical Regulations.

1.5. Return of equipment

According to Article 2.5. of the RMC2021 Technical Regulations (Junior Max, Senior MAX, DD2 and DD2 Master).

1.6. Data acquisition

The Project E20 Vehicle is supplied with a custom data system, this is the only system allowed to be mounted to the steering wheel.

This system includes the integrated isolation monitoring systems warning lights and it's not allowed to add or remove anything to the system including any covering of the display screen.

It is permitted for the driver to install a second data system to the Vehicle, the mounting position has to be on the rear of the driver's seat and mounted in a way that satisfy the chief scrutineer for the event. The driver's own data system is not allowed to connect in any way to the electric powertrain or any of its components or accessories.

The driver's data system must be according to Article 2.6. of the RMC2021 Technical Regulations (Junior Max, Senior MAX, DD2 and DD2 Master).

1.7. Safety equipment

According to Article 3, CIK-FIA technical regulations.

1.8. Advertising on Project E20 vehicle

No sponsor stickers except ROTAX, BRP, MOJO, XPS are allowed on the electric powertrain or any of its components or accessories.

2. MODIFICATIONS, LEGAL ADDITIONS, NON-TECH ITEMS, MEASUREMENTS

Neither the Electrical powertrain or any of its ancillaries may be modified in any way. "Modified" is defined as any change in form, content or function that represents a condition of difference from that originally designed.

It is not permitted for the driver / competitor to perform any work or maintenance on the battery charger, Electric powertrain or any of its accessories. If a competitor is found to have interfered with any of the powertrain components or the charging device the driver / competitor will be excluded from the event.

Only ROTAX employees are permitted to work on any of the Electric powertrain or its accessories.

3. TECHNICAL SPECIFICATIONS FOR THE ELECTRICAL POWERTRAIN

According to 2021 DEKM Technical Regulations.

C. Permitted adjustments to the Chassis, Engine, Carburettor and drive train options

125 Micro MAX – BirelART

| No. | Item | Specification |
|-----|---|---|
| 1 | Carburation and gearing mandatory for the 1 st free practice. | 112 Main Jet must be installed. Front sprocket 13, Rear sprocket 63 teeth. Please note: you will need to install the correct main jet |
| 2 | Carburation and gearing options for the 2 nd free practice through to the Finals | Any main jet from the kit supplied can be used. (105, 106, 107, 108, 109, 110, 111, 112, 113, 114 & 115) Front sprocket 13, Rear sprocket 62, 63 or 64 teeth. |
| 3 | Spark plug type and gap | NGK GR8DI. Filler gauge 1,00 1,20 mm must not fit in between the two electrodes. |
| 4 | Chain length and type | Only chains as supplied at the event by the manufacturer are legal to be used. TBC chain length. |
| 5 | Ride height | Front : TBC Rear : TBC |
| 6 | Camber and Castor | TBC |
| 7 | Ackerman settings | TBC |
| 8 | Seat supports | TBC |
| 9 | Seat fixing | Must be tight at all times. |
| 10 | Other notes | All side bars and front bars (crash protection) are required to be secured tight at all times |
| 11 | Optional parts | TBC |

From the 2nd non-qualifying practice ROTAX recommends: Jet 110, needle position 4, 1,15mm spark plug gap and 85°C engine temperature

Note: Only standard components as supplied at the event by the manufacturer for the specific category may be used in accordance with the RMC GF Technical Regulations 2021 and its appendices.

125 Mini MAX – IPKarting PRAGA

| No. | Item | Specification |
|-----|---|---|
| 1 | Carburation and gearing mandatory for the 1 st free practice. | 117 Main Jet must be installed. Front sprocket 13, Rear sprocket 75 teeth. Please note: you will need to install the correct main jet |
| 2 | Carburation and gearing options for the 2 nd free practice through to the Finals | Any main jet from the kit supplied can be used. (105, 106, 107, 108, 109, 110, 111, 112, 113, 114 & 115) I suppose that this is not correct, because it is not included the main jet 117 (mandatory for the 1 st free practice) and I think that main jets below 110 are too lean for this class Front sprocket 13, Rear sprocket 74, 75 or 76 teeth. |
| 3 | Spark plug type and gap | NGK GR8DI. Filler gauge 1,00 1,20 mm must not fit in between the two electrodes. |
| 4 | Chain length and type | Only chains as supplied at the event by the manufacturer are legal to be used. TBC chain length. |
| 5 | Ride height | Front : TBC Rear : TBC |
| 6 | Camber and Castor | TBC |
| 7 | Ackerman settings | TBC |
| 8 | Seat supports | TBC |
| 9 | Seat fixing | Must be tight at all times. |
| 10 | Other notes | All side bars and front bars (crash protection) are required to be secured tight at all times |
| 11 | Optional parts | TBC |

From the 2nd non-qualifying practice ROTAX recommends: Jet 112, needle position 4, 1,15mm spark plug gap and 65°C engine temperature

Note: Only standard components as supplied at the event by the manufacturer for the specific category may be used in accordance with the RMC GF Technical Regulations 2021 and its appendices.